



AAC	Entry	Perpetual
Known		

← wind/vent **R**

Figure K  
**70**  
Total K  
**72**

Judges Name	
Signature	Number

Flight #

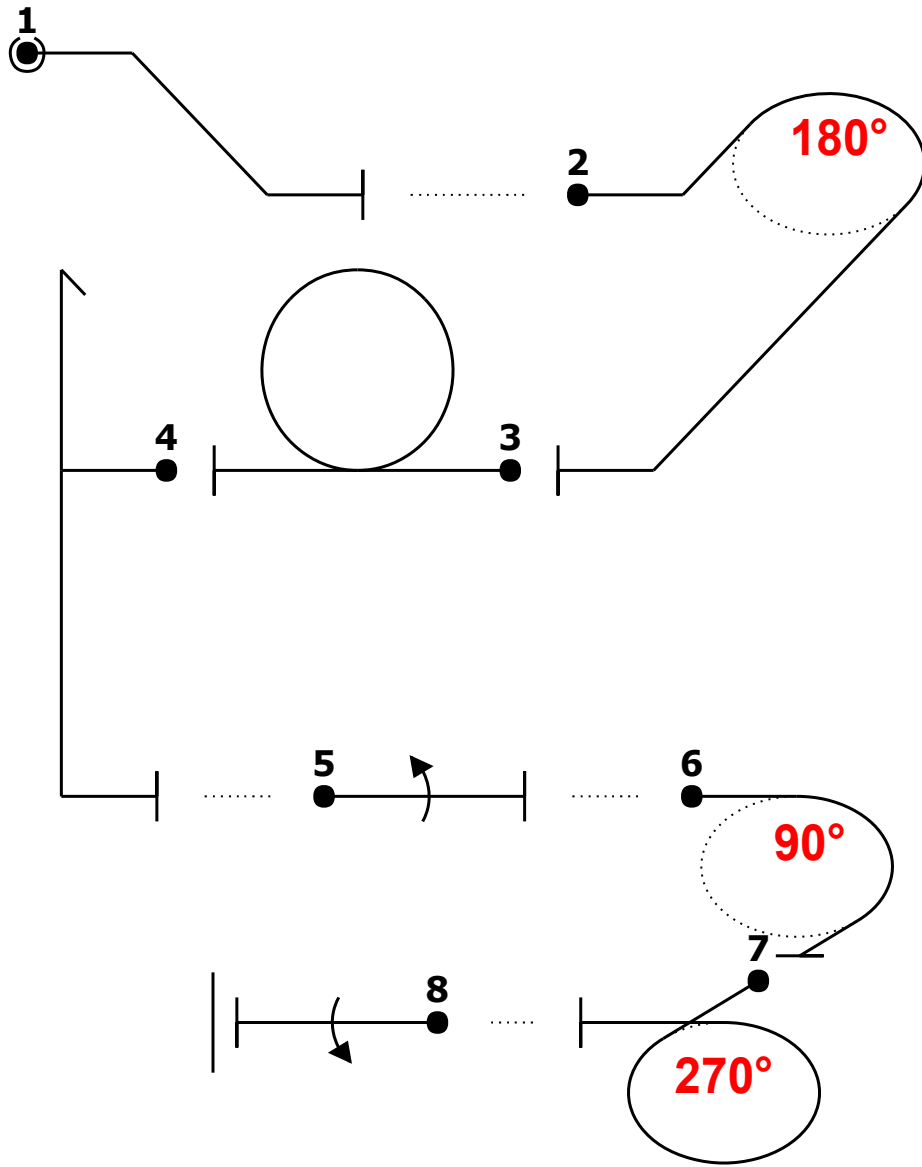


Fig	Pos	Remarks	Grade
1			.
2			.
3			.
4			.
5			.
6			.
7			.
8			.

Positioning	2	.
-------------	---	---

Too Low		Trg Violation	
Too High		Wing Rocks	
Interruptions		Disqual Fig	
Insertions		Other(note...)	

id (5,0) jw... o h... (3,0) 1 (3,0) j 3j (-2,0) 1

<b>Fig 1</b> 1.1.2.3	<b>K</b> 7	<b>Fig 2</b> 0.0	<b>K</b> 8	<b>Fig 3</b> 7.4.1.1	<b>K</b> 10	<b>Fig 4</b> 5.2.1.1	<b>K</b> 17	<b>Fig 5</b> 1.1.1.1 9.1.3.4	<b>K</b> 2 8	<b>Fig 6</b> 2.1.1.1	<b>K</b> 3	<b>Fig 7</b> 2.3.1.1	<b>K</b> 5	<b>Fig 8</b> 1.1.1.1 9.1.3.4	<b>K</b> 2 8
<b>SF 7</b>	<b>7</b>	<b>SF 7</b>	<b>8</b>	<b>SF 7</b>	<b>10</b>	<b>SF 5</b>	<b>17</b>	<b>SF 7</b>	<b>10</b>	<b>SF 2</b>	<b>3</b>	<b>SF 2</b>	<b>5</b>	<b>SF 7</b>	<b>10</b>

Pilot:

A/C:



AAC Entry Perpetual

Known

Figure K

70

Total K

72

Judges Name

Flight #

Signature

Number

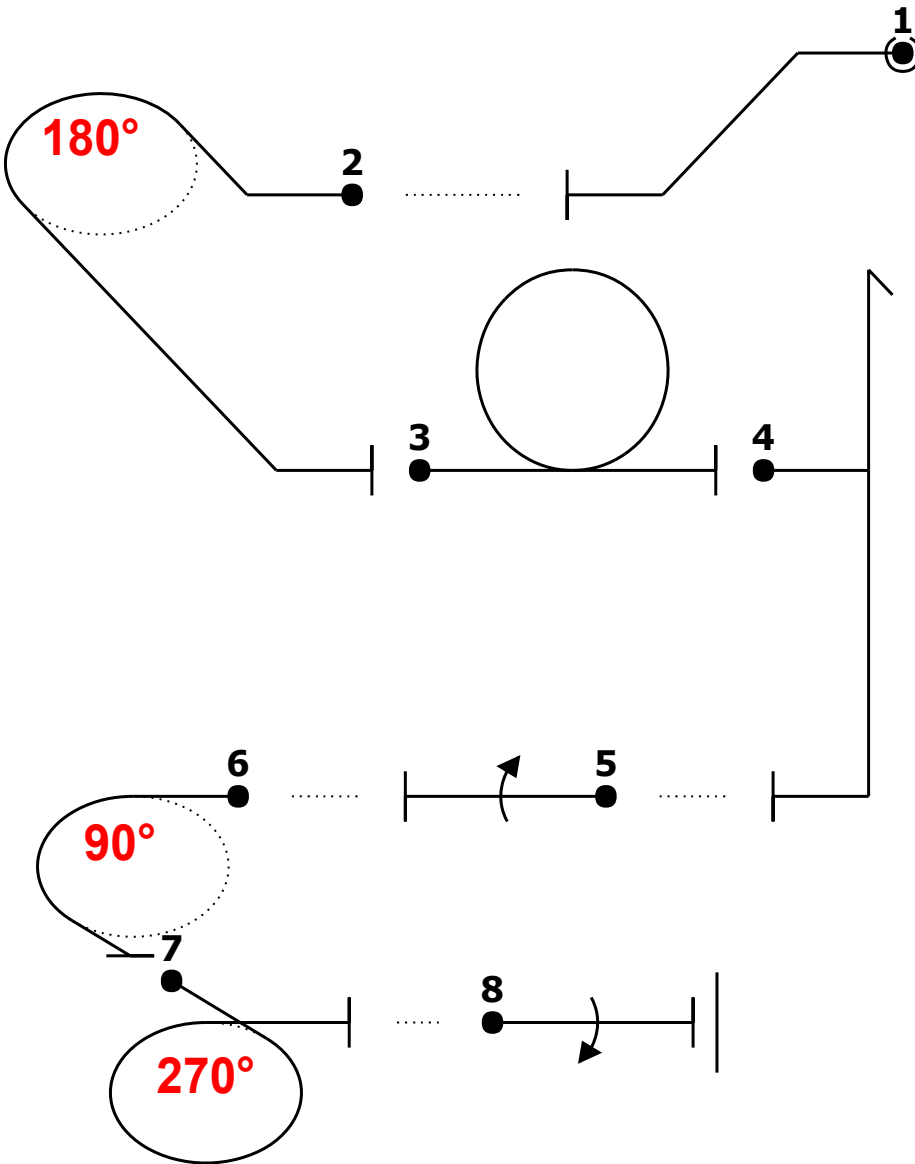


Fig	Pos	Remarks	Grade
1			.
2			.
3			.
4			.
5			.
6			.
7			.
8			.

Positioning	2	.
-------------	---	---

Too Low		Trg Violation	
Too High		Wing Rocks	
Interruptions		Disqual Fig	
Insertions		Other(note...)	

id (5,0) jw... o h... (3,0) 1 (3,0) j 3j (-2,0) 1

Fig 1	K	Fig 2	K	Fig 3	K	Fig 4	K	Fig 5	K	Fig 6	K	Fig 7	K	Fig 8	K
1.1.2.3	7	0.0	8	7.4.1.1	10	5.2.1.1	17	1.1.1.1	2	2.1.1.1	3	2.3.1.1	5	1.1.1.1	2
SF 7	7	SF 7	8	SF 7	10	SF 5	17	9.1.3.4	8	SF 2	3	SF 2	5	9.1.3.4	8
								SF 7	10					SF 7	10

Pilot:

A/C:

wind/vent

